



DAEWOO

POWER PRODUCTS

DDP17000

Submersible pump



USER'S MANUAL

www.daewoopowerproducts.com

Manufactured under license of Daewoo International Corporation, Korea

INDEX

1. INSTALLATION AND OPERATING INSTRUCTIONS	2
2. TROUBLESHOOTING	4
3. TECHNICAL SPECIFICATIONS	4
4. PART DESCRIPTION	4
5. EXPLODED VIEW AND SPARE PART LIST	5
WARRANTY	7

1. INSTALLATION AND OPERATING INSTRUCTIONS

Read these instructions before starting the pump and keep them in a safe place.

WARNING! The pump must not be installed in swimming pools; it must be installed and used in accordance with NF C 15-100 installation rules.

Ask your specialist electrician for advice.

The pump must not be in operation when people are present at the water outlets where it is used.

Pollution of the liquid could occur due to leakage of lubricants

The pump must not be used when people are in the water when it is used for cleaning and other maintenance of swimming pools.

PRECAUTION

Do not expose the power outlet to damp.

Do not discharge corrosive liquids (chemicals, cleaning fluids etc...) or abrasives.

Do not expose the pump to frost.

Do not run the pump without water.

Keep children well away from the working area.

Never carry the pump by its cable and do not pull the cable to disconnect it.

Do not modify the inside of the pump or the float, because the device may no longer be sealed. Call in a specialist if necessary.

The fingers mustn't insert into the water inlet and water outlet when the pump is operating.

This appliance is not intended for use by persons (including children) with reduced physical, sensory or mental capabilities, or lack of experience and knowledge, unless they have been given supervision or instruction concerning use of the appliance by a person responsible for their safety.

Children should be supervised to ensure that they do not play with the appliance.

When the pump intended to be connected to the water mains, additional backflow prevention device shall be set to prevent backsiphonage of non-potable water into the water mains.

Installation

This pump is designed for exclusively domestic installation:

In places where there is a risk of flooding.

In sumps or wells.

Keep an empty space around the pump so that the float switch can work without being blocked (e.g. use a sump at least 40x40x50 cm).

The pump is designed to run in liquid not exceeding 35°C.

It can be installed:

With either a fixed conduit.

Or a flexible conduit.

It must be fixed by the handle provided for the purpose or set at the bottom of the sump (it must be clean with no impurities or sludge)

If water level is low (long period of drought), be careful to ensure that any impurities or sludge, after drying, do not prevent the pump from starting up. Consequently, you must make sure that the site where the pump is installed is clean and run the pump from time to time.

The appliance can only be used at the upward position.

Mains supply

Before starting up the pump make sure that:

- The pump is to be powered by a residual differential current device, with a rated operating differential current not exceeding 30 mA.
- The mains supply voltage matches the voltage indicated on the pump identification plate (230-v~/50Hz).

Ask your specialist electrician for advice.

Make sure that the fuse protecting the power outlet is at least 6 amps.

WARNING! If the power cable is damaged, it must be replaced by a professional to avoid the risk of danger.

Commissioning

After installing the pump as indicated in these instructions, it is ready to work.

Servicing!

Disconnect the power outlet before making any adjustments or performing servicing operations.

The pump does not require any specific maintenance but for longer life we recommend that you check and clean the area in which the pump is installed (every three months, for example).

For temporary use, clean the pump with clean water after using it.

Cleaning the turbine

(Remove the plug from the power outlet before cleaning operations start)

If there are heavy deposits in the pump body, the lower part must be dismantled as follows:

1. Remove the 4 screws from the lower side of the suction basket.
2. Detach the suction basket from the body of the pump.
3. Clean the pump with clean water.

WARNING! Do not put down the pump on the turbine nor hold it by this point either!

4. For reassembly, repeat the above operations in reverse order.

Setting the switch point

The float switch point can be set by adjusting the notches.

Check the following points before switching on:

- The float switch must be installed so that the switch point level can be reached easily with very little effort. Make sure of this as follows: immerse the pump in a container full of water and lift the float switch carefully by hand, then lower it. You can thereby check that the pump starts and stops.
- Make sure that the gap between the head of the float switch and the float switch anchorage device is not too small. If the gap is not wide enough, perfect operation is not guaranteed.
- Concerning adjustment, make sure that the float switch does not touch the floor before the pump has stopped. **Warning!** Risk of running dry.
- To modify the starting level, slide the float cable into the notch provided for the purpose on the handle.

2. TROUBLESHOOTING

Anomalies	Sources	Remedies
The pump won't start.	<ul style="list-style-type: none"> - Power not switched on. - The float switch is not connected to the circuit. 	<ul style="list-style-type: none"> - Check the mains voltage. - Lift the float.
The pump won't discharge.	<ul style="list-style-type: none"> - The intake filter is clogged. - The discharge pipe is stuck. 	<ul style="list-style-type: none"> - Clean the intake filter with a water jet. - Release the pipe.
The pump won't stop.	<ul style="list-style-type: none"> - The float switch is blocked in the upper part. 	<ul style="list-style-type: none"> - Release the float and reposition the pump.
The flow rate is inadequate.	<ul style="list-style-type: none"> - The intake filter is clogged. - Pumping flow rate falls because the pump is clogged with water impurities. 	<ul style="list-style-type: none"> - Clean the filter. - Clean the pump and its environment.
The pump stops after working for a short time.	<ul style="list-style-type: none"> - The motor protection device stops the pump because the water is too dirty. - The water is too hot, the heat protector stops the pump. 	<ul style="list-style-type: none"> - Pull out the plug and clean the pump and sump. - Make sure the water temperature does not exceed 35°C!



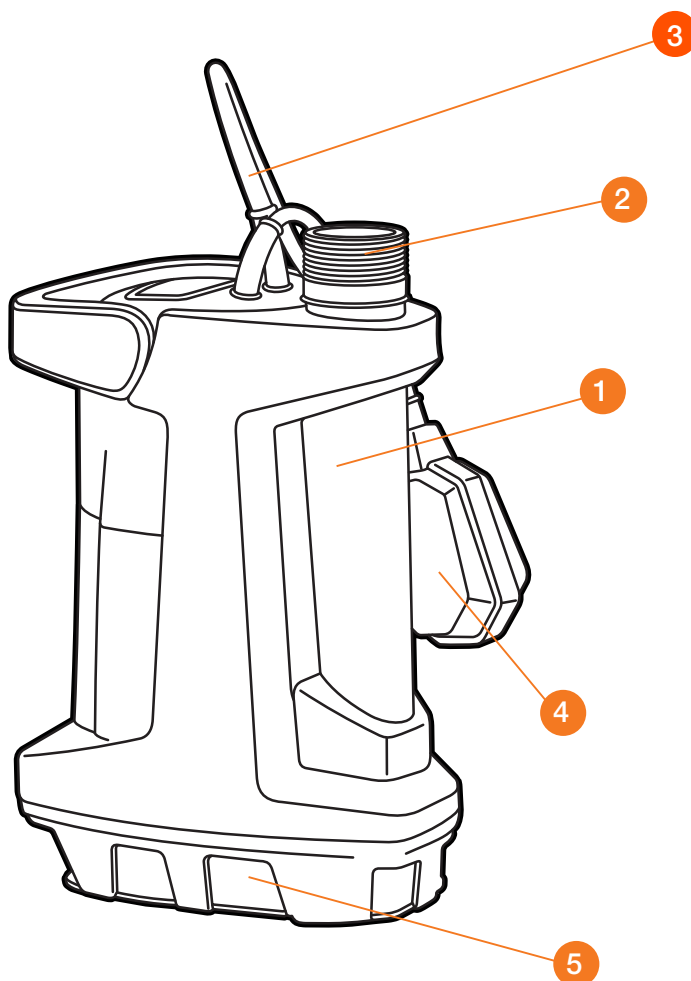
“Electrical products must not be thrown out with domestic waste. Recycle them at the special disposal centres provided for the purpose. Contact your local authorities or stockist for advice on recycling”.

3. TECHNICAL SPECIFICATIONS

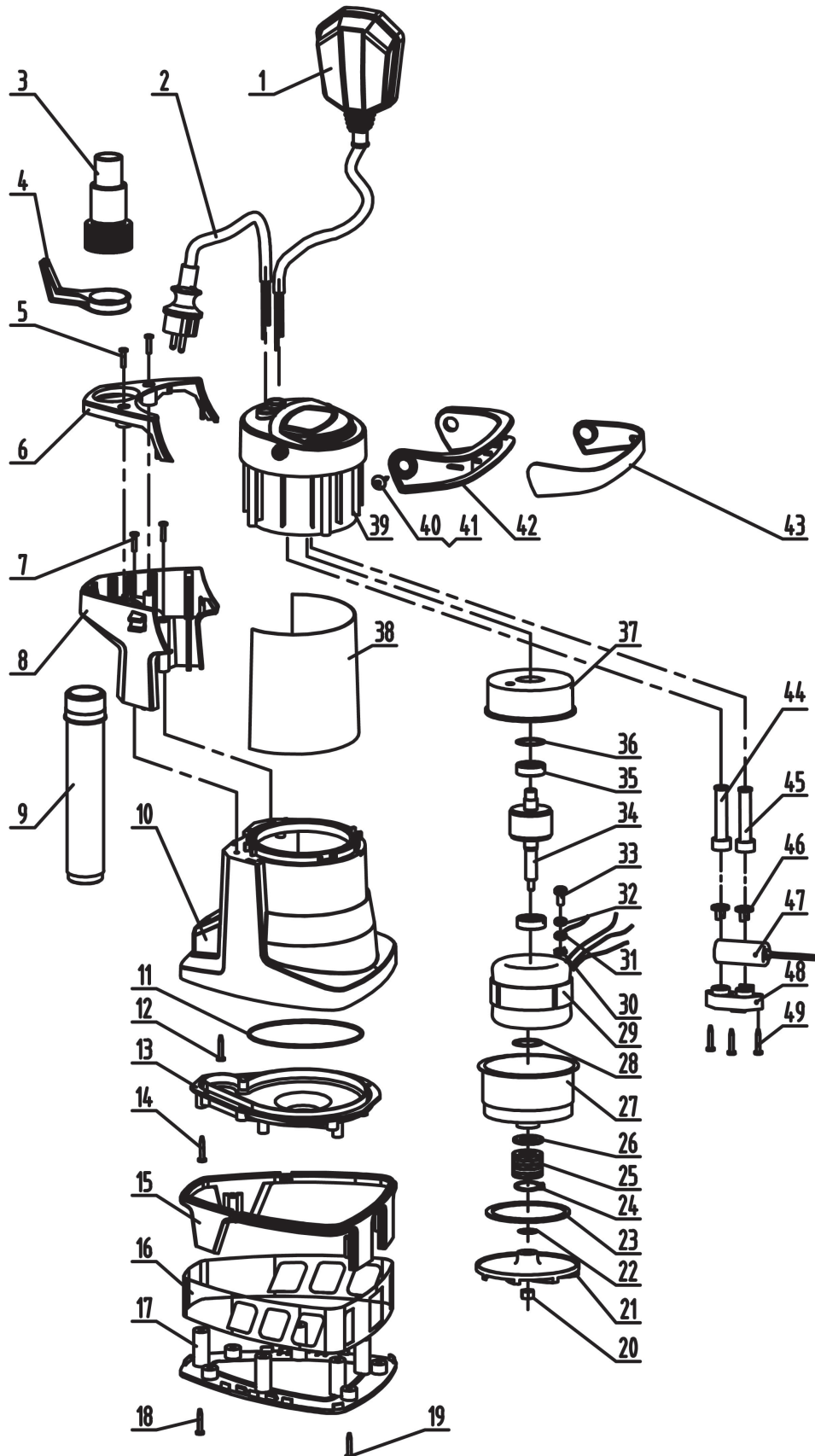
Power: 1100 W
 Max flow: 15000 L/h
 Max lifting head: 10 m
 Max suction depth: 7 m
 Max pressure: 1 bar
 Hose connection: Ø 1,1 1/4, 1 1/2 "
 Power cable length: 10 m
 Max temperature: 35°C
 Particle size: 35 mm

4. PART DESCRIPTION

1. Pump casing
2. Outlet pipe
3. Power cable
4. Float
5. Water inlet holes



5. EXPLODED VIEW AND SPARE PART LIST



NO.	Description	QTY.		NO.	Description	QTY.
1	Float switch	1		26	Skeleton seal	1
2	Cable and plug	1		27	Front motor cover	1
3	Output connector+washer	1		28	Washer	1
4	Hook	1		29	Stator	1
5	Screw	2		30	Gasket	1
6	Bracket cover	1		31	Earth wire	1
7	Screw	2		32	Spring washer	1
8	Bracket	1		33	Screw	1
9	Water outlet tube	1		34	Rotor	1
10	Pump body	1		35	Bearing	2
11	O ring	1		36	Washer	1
12	Screw	4		37	Rear motor cover	1
13	Inner base	1		38	stainless steel sleeve	1
14	Screw	6		39	Rear pump shell	1
15	Pump base	1		40	Screw	2
16	Pump base fence	1		41	Washer	2
17	Pump base plate	1		42	Handle	1
18	Screw	5		43	Soft cover of handle	1
19	Screw			44	Cable sheath	1
20	Nut	1		45	Cable sheath	1
21	Impeller	1		46	Cable buckle	1
22	Washer	1		47	Capacitor	1
23	O ring	1		48	Cable block	1
24	Jump ring	1		49	Screw	3
25	Mechanical seal	1				

WARRANTY CARD

<div></div>	<div></div>
Product model	Date of sale
<div></div>	<div></div>
Serial number	Company
<div></div>	<div></div>
Username	Client's signature

The product is in good conditions and fully complete. Read and agree the terms of the warranty.

GUARANTEE

The warranty period starts from the date of sale of the products and covers 2 years for all power products.

During the warranty period, free failures caused due to the use of poor-quality materials in the production and manufacturer workmanship admitted fault are removed. The guarantee comes into force only when warranty card and cutting coupons are properly filled. The product is accepted for repair in its pure form and full completeness.

WARRANTY DOES NOT COVER

- Mechanical damage (cracks, chips, etc.) and damage caused by exposure to aggressive media, foreign objects inside the unit and air vents, as well as for damage occurred as a result of improper storage (corrosion of metal parts);
- Failures caused by overloading or product misuse, use of the product for other purposes. A sure sign of overload products is melting or discoloration of parts due to the high temperature, simultaneous failure of two or more nodes, teaser on the surfaces of the cylinder and the piston or destruction of piston rings. Also, the warranty does not cover failure of the automatic voltage regulator due to incorrect operation;
- Failure caused by clogging of the fuel and cooling systems;
- Wearing parts (carbon brushes, belts, rubber seals, oil seals, shock absorbers, springs, clutches, spark plugs,

- mufflers, nozzles, pulleys, guide rollers, cables, recoil starter, chucks, collets, removable batteries, filters and safety elements, grease, removable devices, equipment, knives, drills, etc.);
- Electrical cables with mechanical and thermal damage;
- Product opened or repaired by a non-authorized service center.
- Prevention, care products (cleaning, washing, lubrication, etc.), installation and configuration of the product;
- Natural wear products (production share);
- Failures caused by using the product for the needs related to business activities;
- If the warranty card is empty or missing seal (stamp) of the Seller;
- The absence of the holder's signature on the warranty card.

DAEWOO

DAEWOO

DAEWOO

<div></div>	Product	<div></div>	Product	<div></div>
<div></div>	Model	<div></div>	Model	<div></div>
<div></div>	Company	<div></div>	Company	<div></div>
<div></div>	Date of sale	<div></div>	Date of sale	<div></div>



DAEWOO
POWER PRODUCTS

www.daewoopowerproducts.com

Manufactured under license of Daewoo International Corporation, Korea